

Lesson6 Web pages Design

【OS & Software】

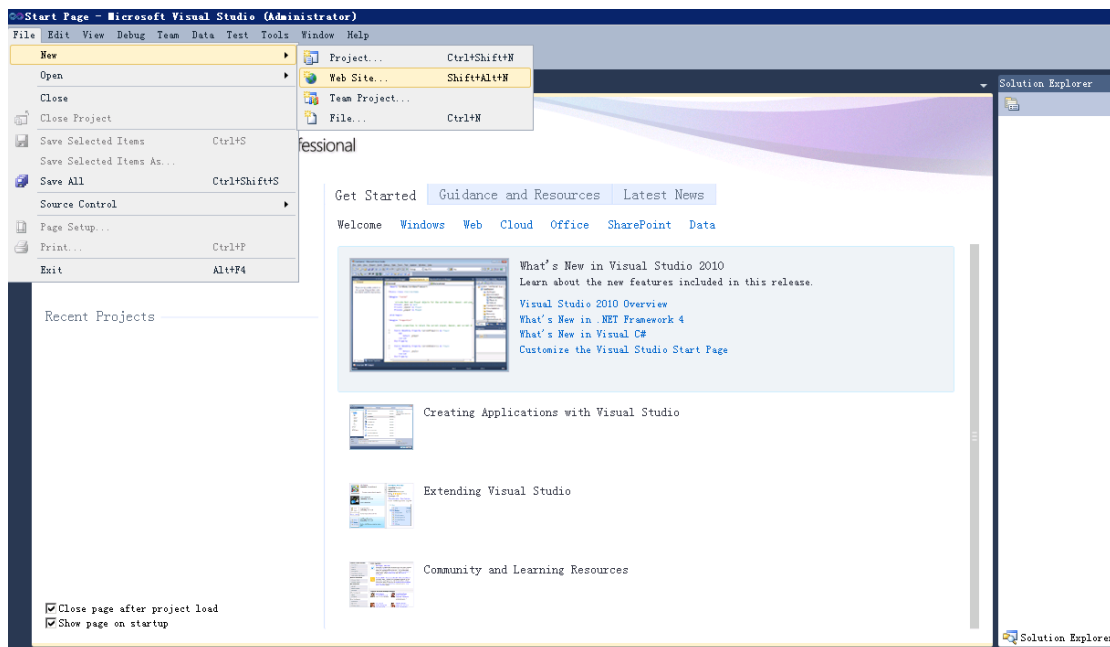
Windows XP/7、VS2005/08/10、SQLServer2008 or Access

【Learning Outcomes】

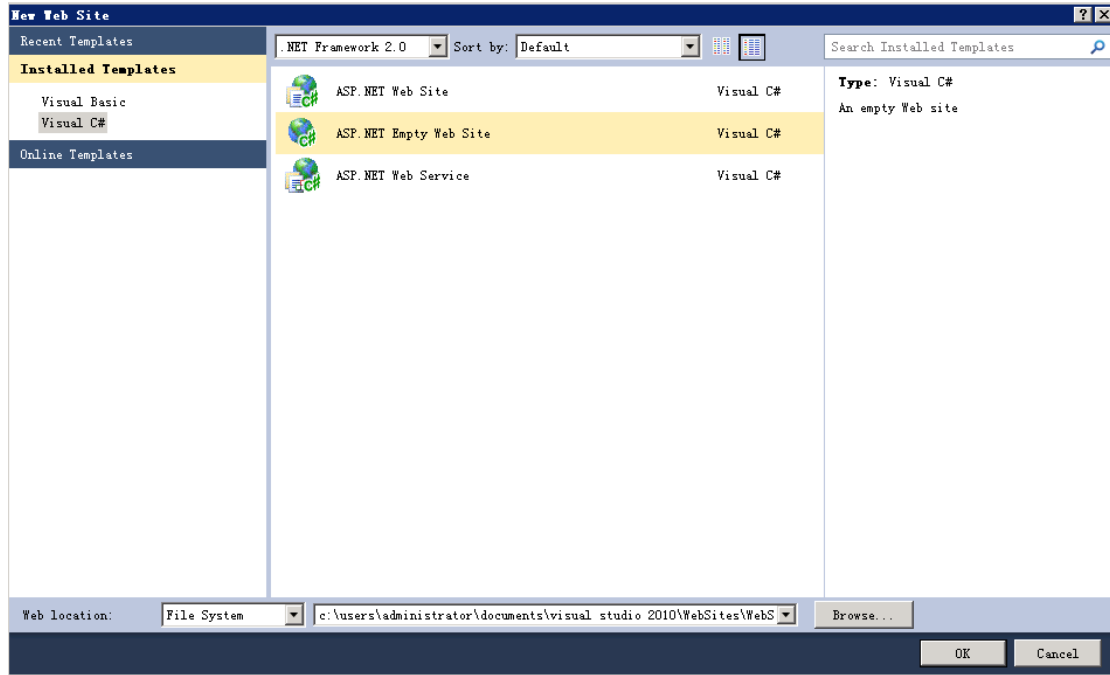
You should understand the basic principal of the website, and also writing a program to show the information which stored in database online.

【Instructions】

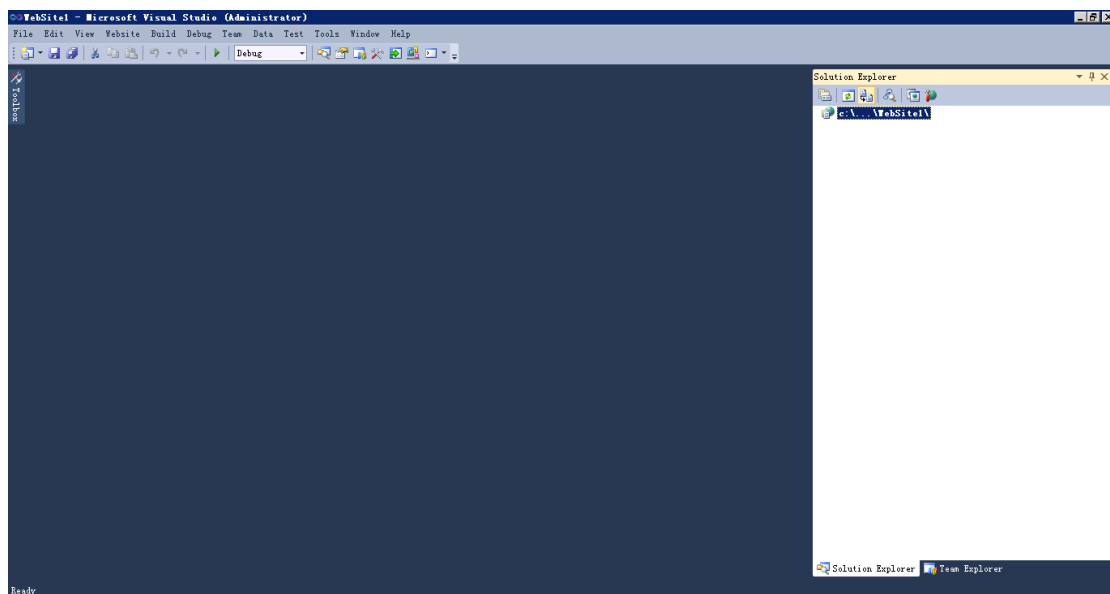
1. Running VS2005/2008/2010,select “Website”(vs2010 is used in this lab manual)



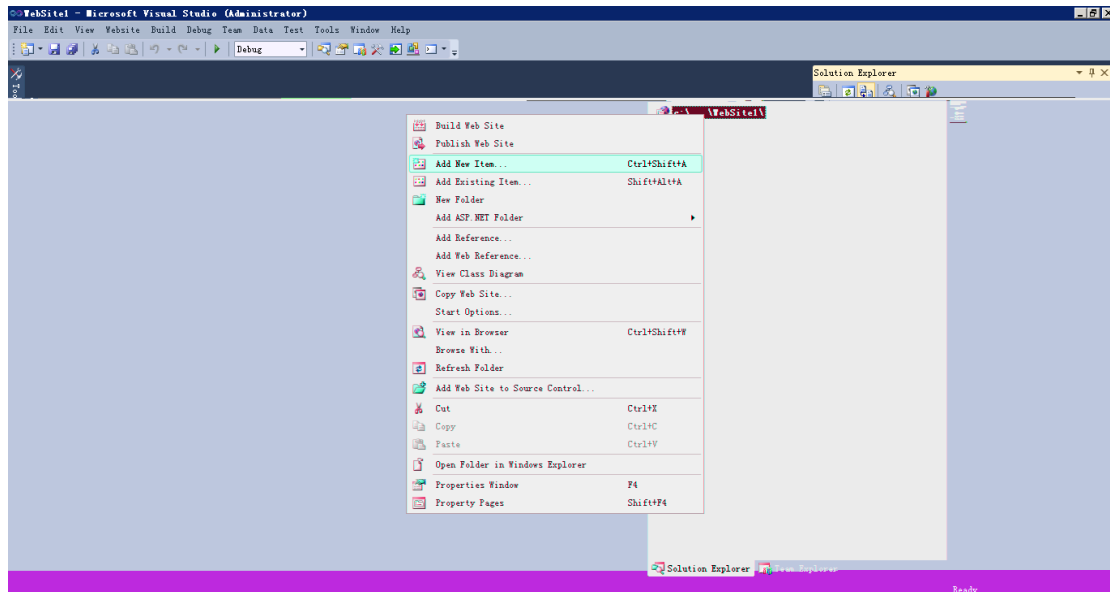
2. Choose “Asp.net Empty Web Site” in the popup menu, and then click “OK”. Be careful, we choose “.Net Framework 2.0” in the dropdown list control, and we may choose “Visual C#” in the left panel “Installed Templates”.



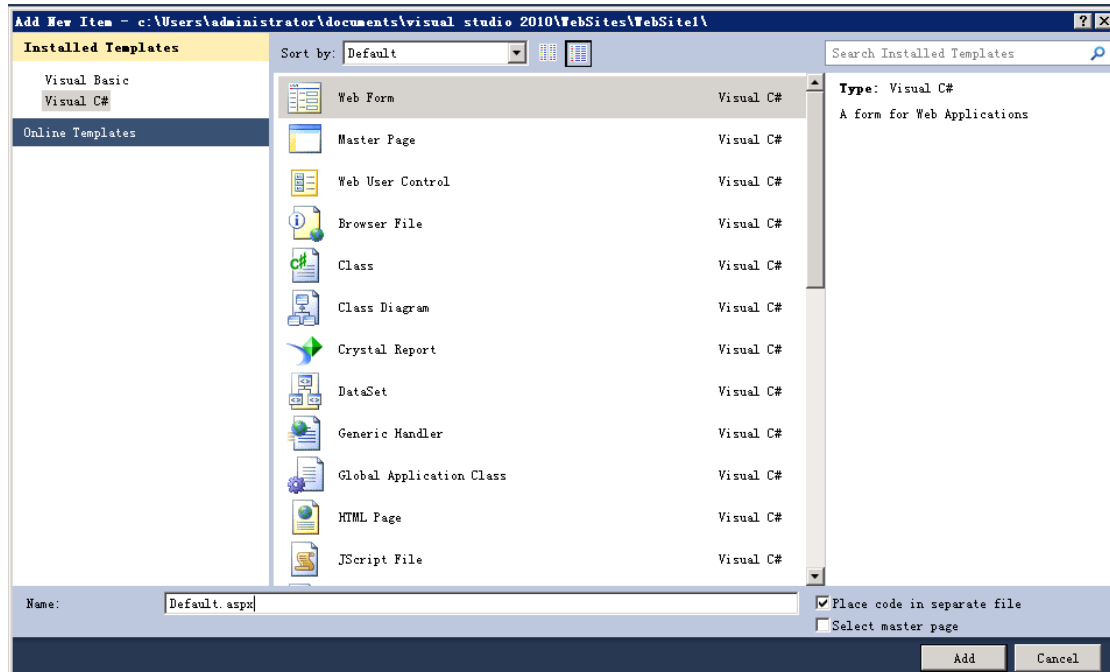
3. The following picture shows the vs2010 programming environment.



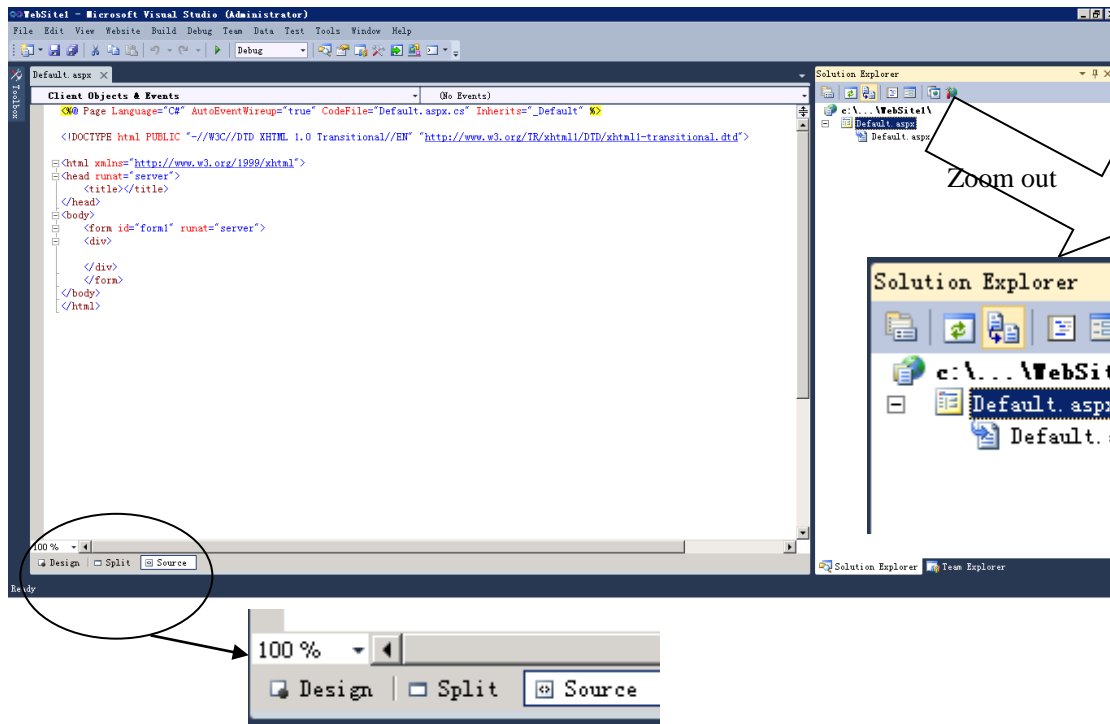
Solution Explorer lies on the right side. We can add new webpages by right click and then choose “Add New Item” from “C:\...\WebSite1” as follows.



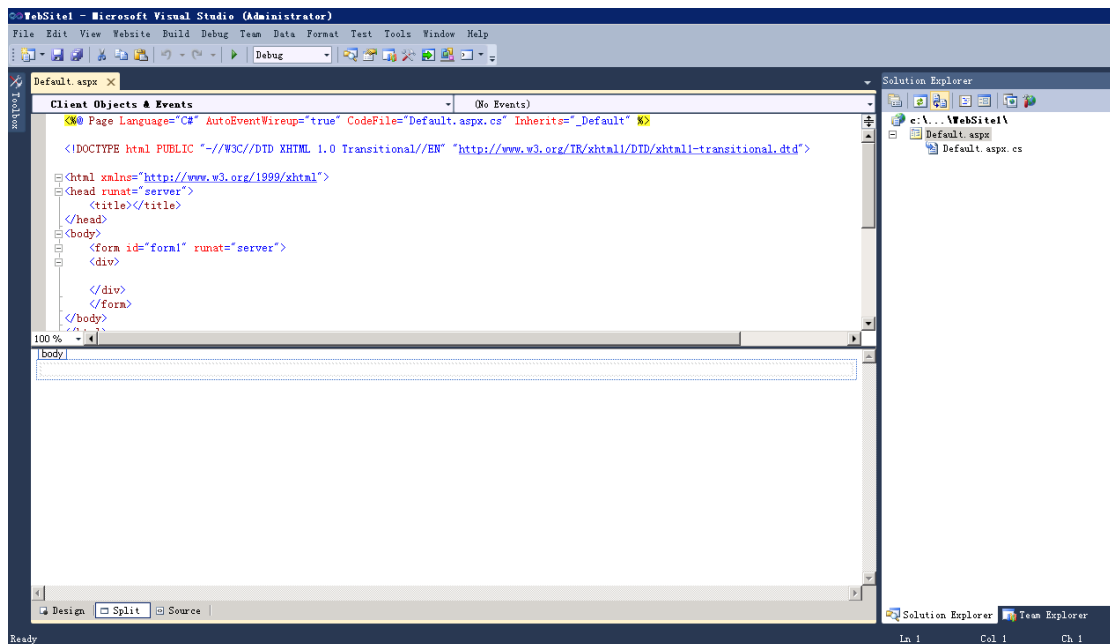
And then choose “Web Form”, type in the name of the new file, then click “Add”.



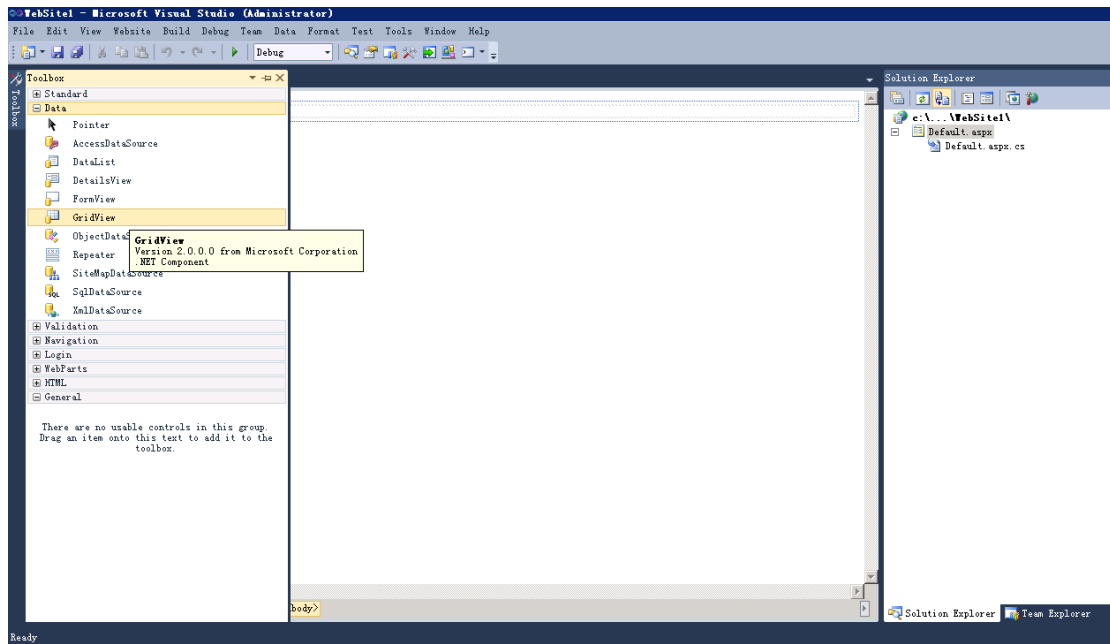
4. Double click “Default.aspx”, then the code of “Default.aspx” shows in the main area.



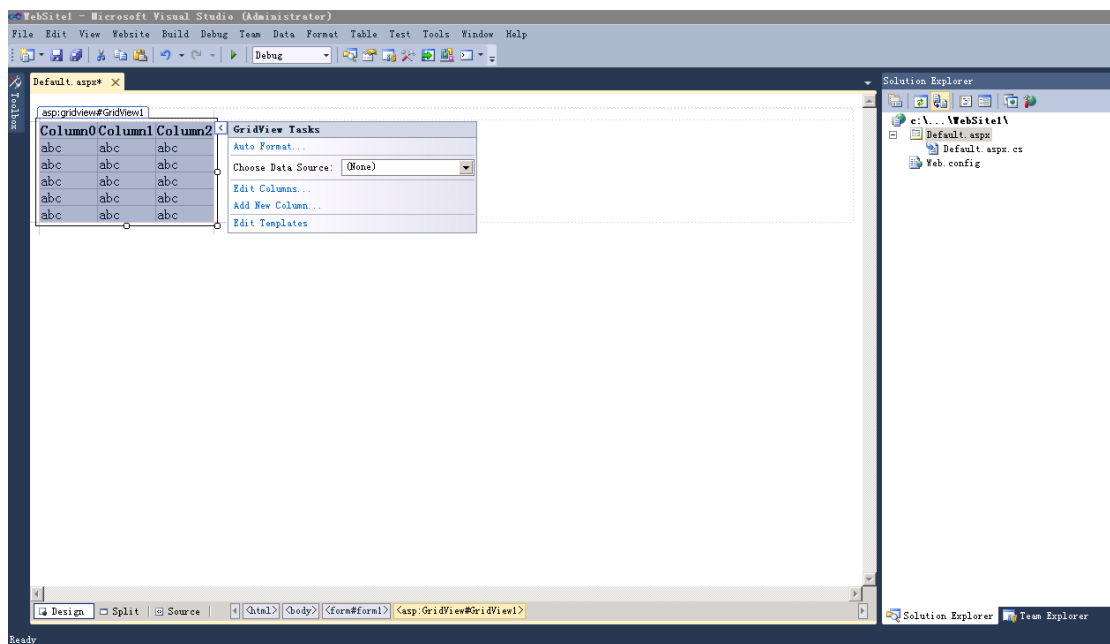
5. VS2010 give three views of the files, they are “Design”, ”Split” and “Source”. The following figure shows the “Split” view.



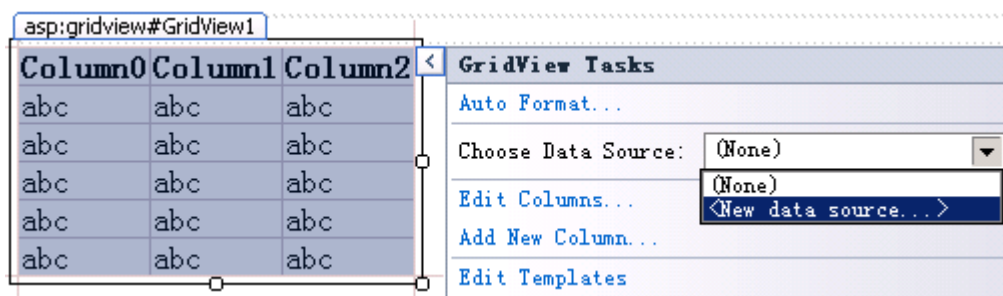
6. In “Design” view, we can find the toolbox in the left-upper corner, click “Toolbox” then choose “Data”->“Gridview”.



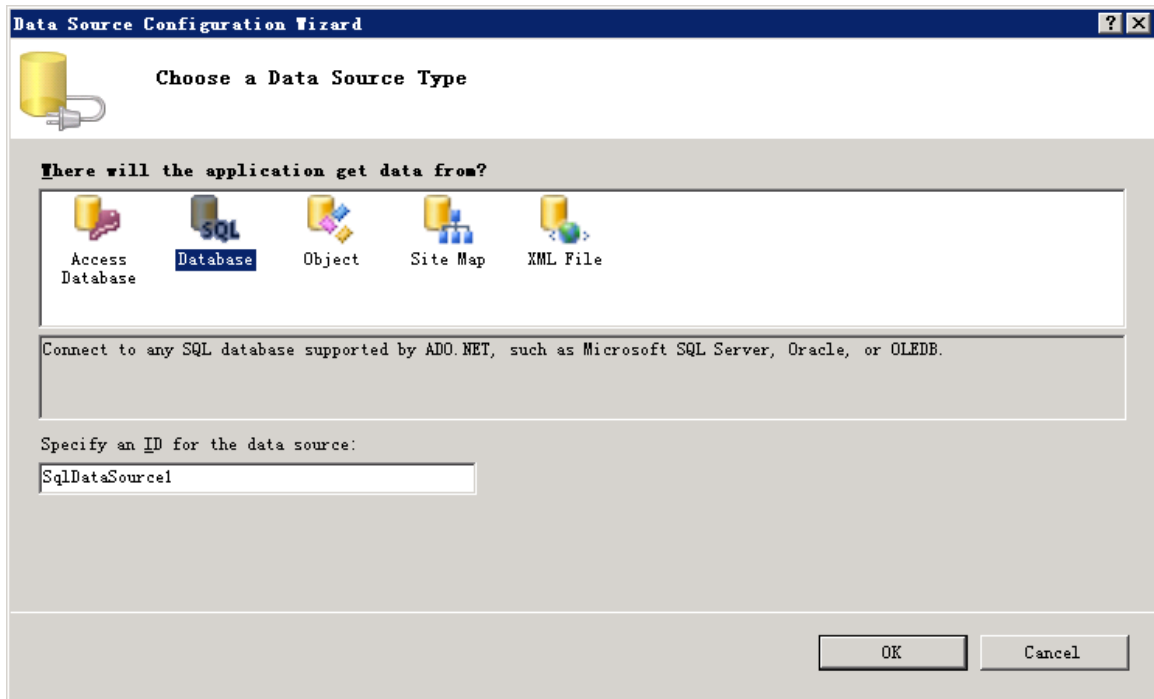
7. Drag “GridView” to the main area, and it shows as follows.



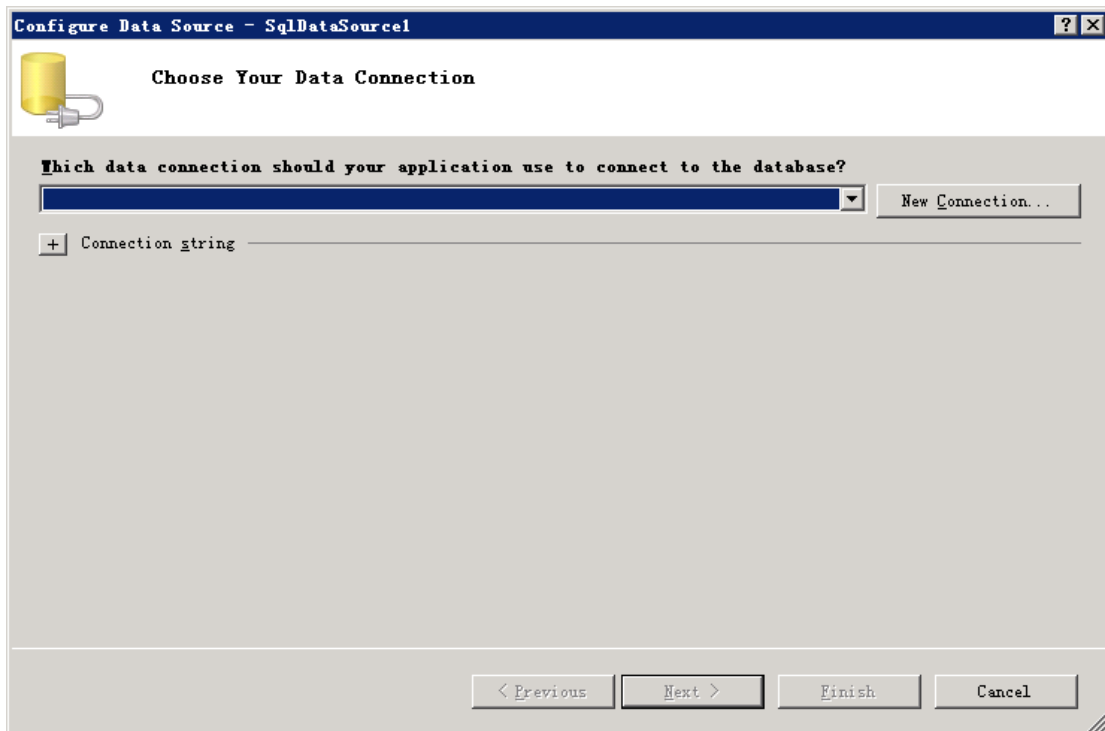
8. Click the “triangle” icon of GridView, then you can configure the tasks of it. And choose “<New data source...>” in the dropdown list.



9. Select “Database” in the dialog, and then click “OK”.



10. Choose “New Connection..”.



11. Configure “Add Connection”.

Add Connection [?] [X]

Enter information to connect to the selected data source or click "Change" to choose a different data source and/or provider.

Data source: Microsoft SQL Server (SqlClient) [Change]

Server name: [.] [Refresh]

Log on to the server

Use Windows Authentication

Use SQL Server Authentication

User name: []

Password: []

Save my password

Connect to a database

Select or enter a database name: [test]

Attach a database file: [] [Browse...]

Logical name: []

[Advanced...]

[Test Connection] [OK] [Cancel]

Server name "." means the local

"Use Windows Authentication" means we will not supply the password.

Select the database in our program

12. Return to "Configure Data Source". Then click "Next".

Configure Data Source - SqlDataSource1 [?] [X]

Choose Your Data Connection

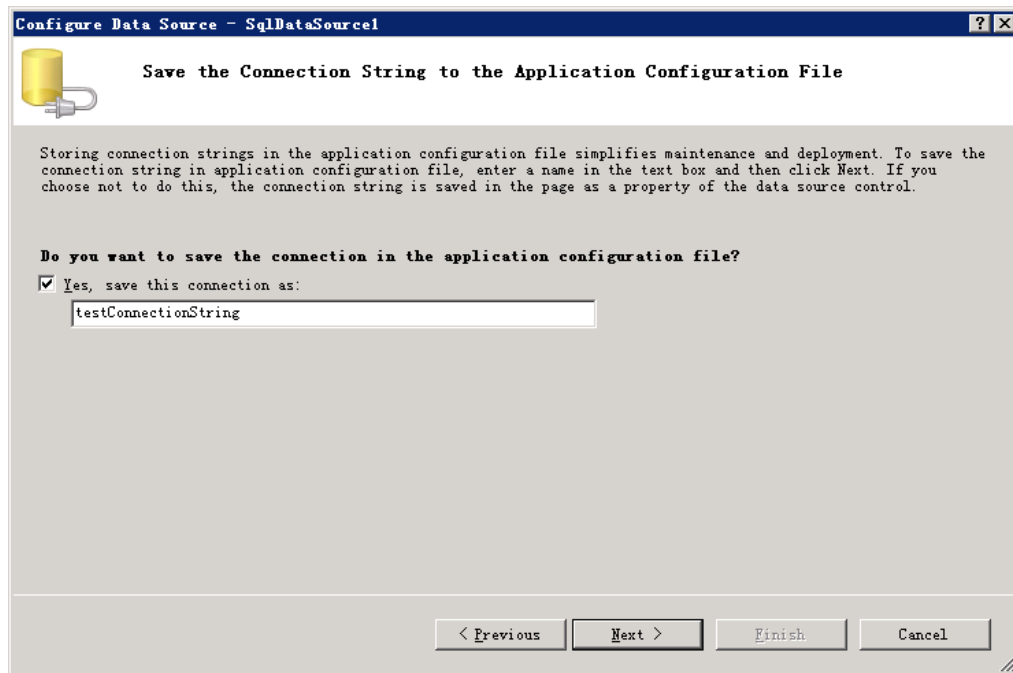
Which data connection should your application use to connect to the database?

[win-arfooludnd4.test.dbo] [New Connection...]

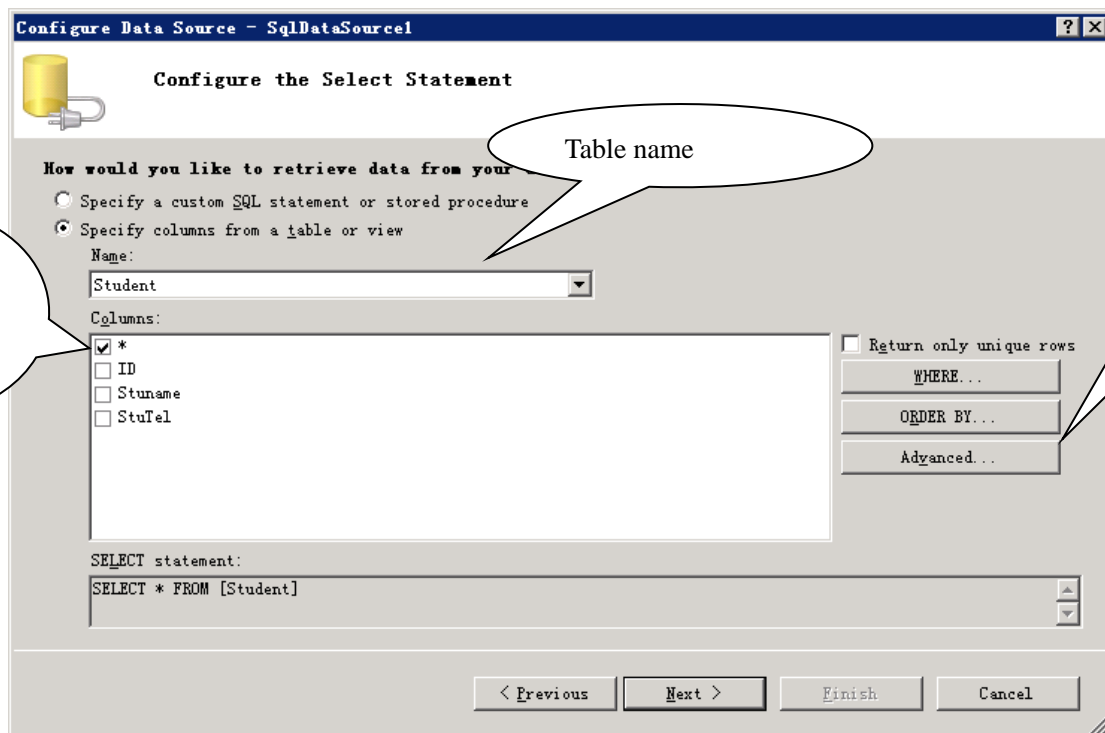
+ Connection string []

[< Previous] [Next >] [Finish] [Cancel]

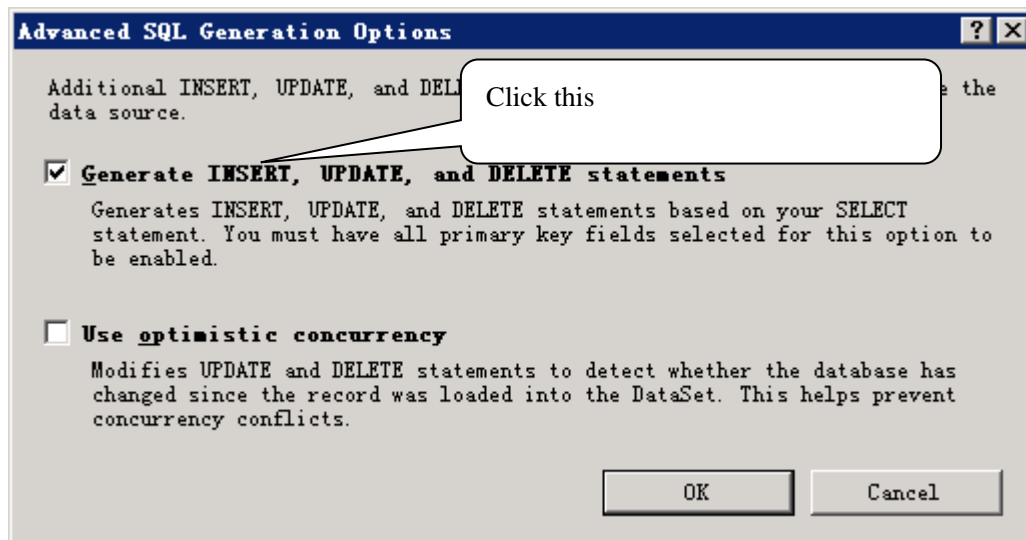
13. Save the connection string, then we can use it any time and without the upper configuration process.



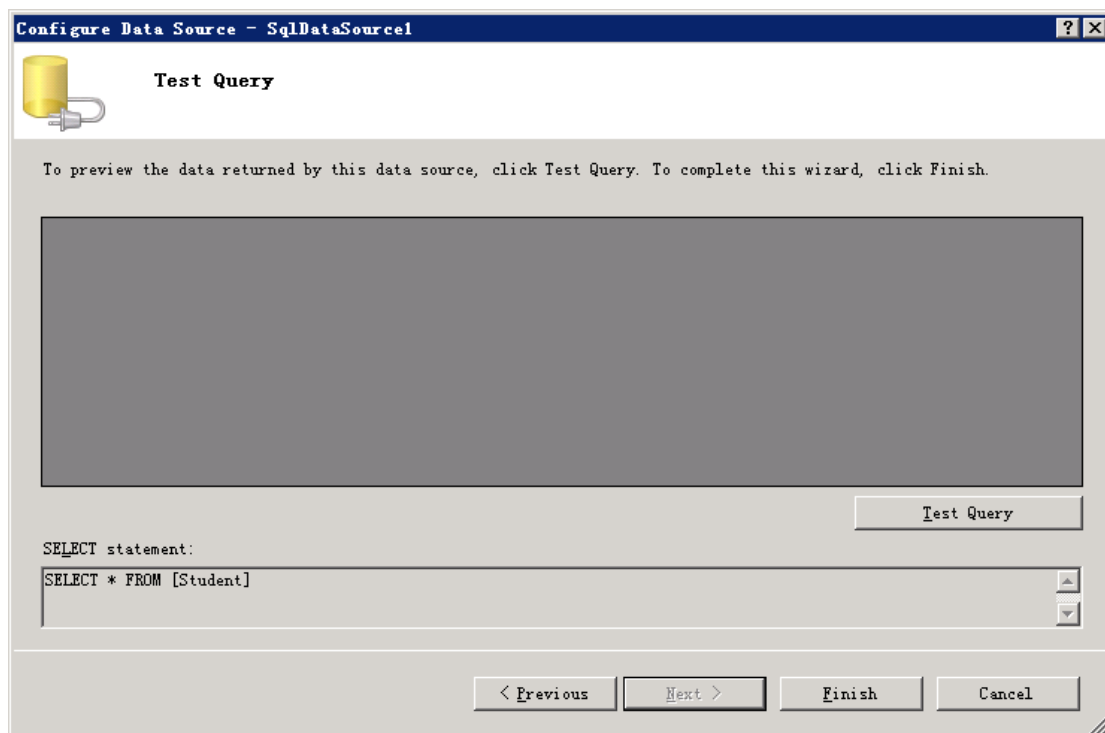
14. Choose table which you want to show on the web.



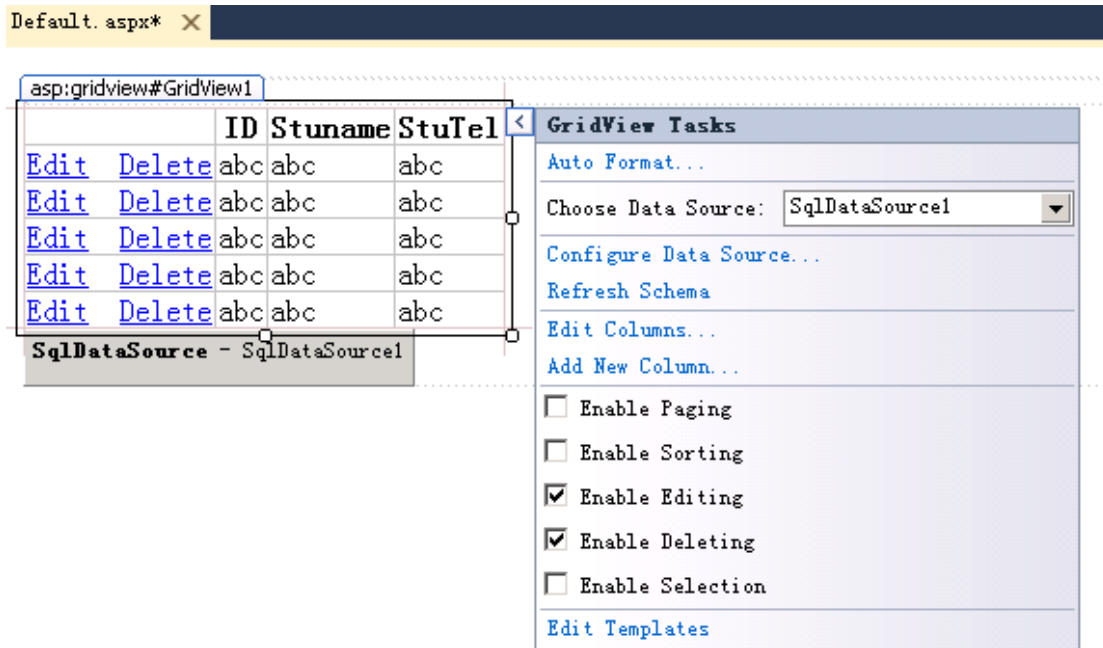
15. If you want to edit the data through webpage, you should click "Advanced" in the upper figure. And then click "Generate Insert, Update and Delete statements"




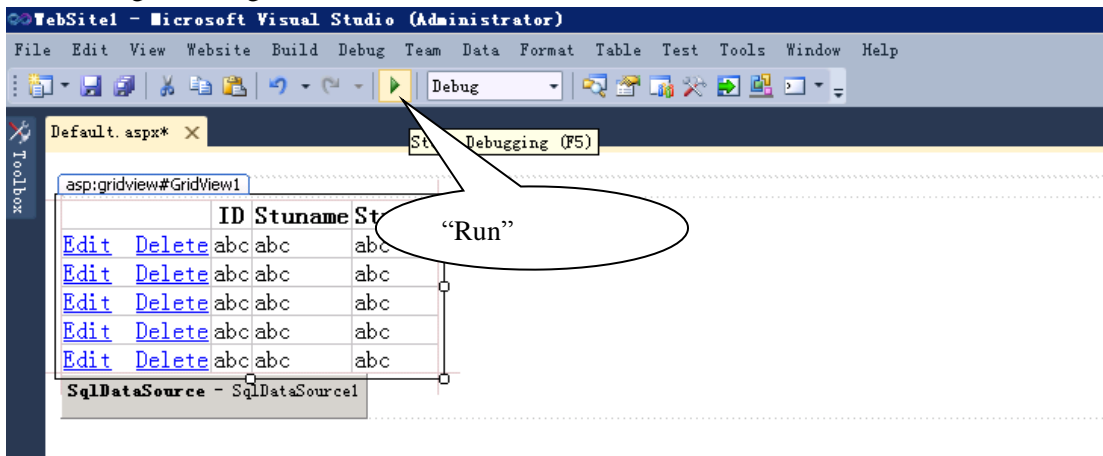
16. Then click “OK”, and now, the process of database have been tackled successfully. Then click “Finish”.



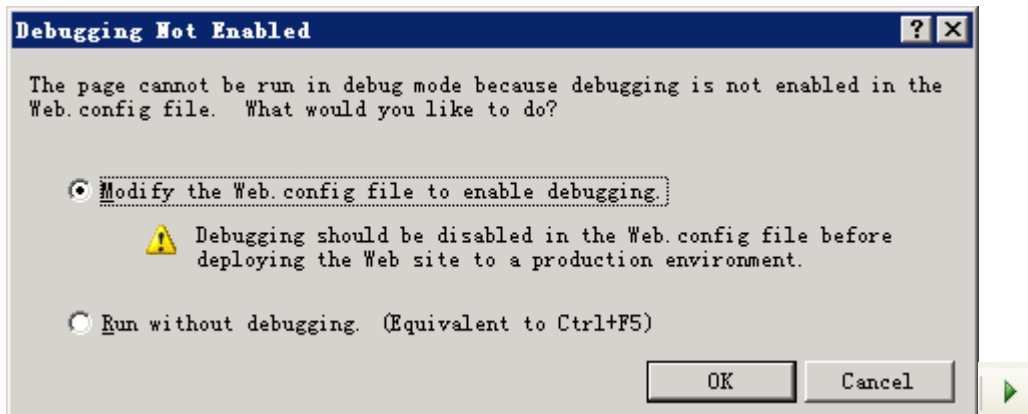
17. We come back to VS2010 main area. Click the “triangle” icon of the GridView again. Then choose “Enable Editing” and “Enable Deleting”.



18. When finished all the configure setting, you can click “run” on the toolbar  to see whether it goes all right.



At the first time when you run this page, here we will see a dialog to decide whether to use debug. Here we choose the first option “Modify the Web.config file to enable debuggin”.



21. Results.

| | ID | Stuname | StuTel |
|---|----|---------|-----------|
| edit delete | 1 | Jack | 023834842 |
| edit delete | 2 | Frank | 2344322 |
| edit delete | 3 | Bush | 66666666 |

【Cautions】

1. You must install VS2005/2008/2010 at first, then you can use any kind of database, such as Access, SQL Server et al.
2. Write your correct ID and student name.

【Assessments】

1. Hand out the lab report to the specify URL.
2. Hand out the project files at the same time.